

508

Non-return valves with ball
System B

Technical Data Sheet



Description

The non-return valves with ball 508 consists of a self-cleaning ball lifted by the fluid and guided to a lateral seat, completely out of the way. This system provides a full bore, even with loaded fluids, without any risk of blockage.

- Vertical ascending and horizontal position (position the ball housing above the axis of the pipe)
- Minimum head loss
- Silent, robust
- Non incrustating materials
- Sealing ensured by an elastomer seal fixed on the seat



508

Non-return valves with ball - System B

DN	PFA in bar	PS in bar				Cat.	Ref.	Weight Kg
		L1	L2	G1	G2			
1	10	10	10	10	10	4.3	149B3202	1,30
1 1/4	10	10	10	10	10	I	149B3203	1,90
1 1/2	10	10	10	10	10	I	149B3204	2,45
2	10	10	10	10	10	I	149B3205	3,50
2 1/2	10	10	10	10	10	I	149B3206	5,90

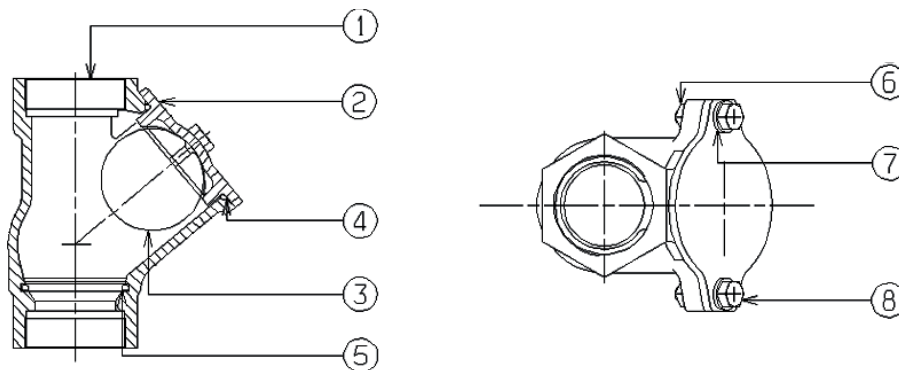
Important notice :

The indicated pressure for the different categories of fluids (L1/L2/G1/G2) is under no condition a guarantee of use. Therefore, it is essential to validate the use of products under given operating conditions.

Technical features

Operating temperature	-10 °C to 90 °C
Permissible operating pressure (PFA) in water	See table above
Maximum permissible pressure (PS) other mediums	See table above
Connection	Female/female, (BSP)
Mediums	Waste water, viscous liquids, loaded liquids

Nomenclature and materials



N°	Description	Materials	EURO	ANSI
1	Body	Cast iron / Epoxy ext	EN1561 EN-GJL-250	ASTM A 48 35 B
2	Cover	Ductile iron / Epoxy	EN1563 EN-GJS-400-15	ASTM A 536 66-45-12
3	Ball density 1,30	Thermodur		
4	Seal	NBR (nitrile)		
5	Seal	NBR (nitrile)		
6	Nut	Stainless steel A2	EN 100 88- 3 X5Cr-Ni18-10	AISI 304 NF EN 150 3506
7	Washer	Stainless steel A2	EN 100 88- 3 X5Cr-Ni18-10	AISI 304 NF EN 150 3506
8	Screw	Stainless steel A2	EN 100 88- 3 X5Cr-Ni18-10	AISI 304 NF EN 150 3506

Approvals



International construction Standards :

CE Directive 2014/68/UE

CE conformity regulation 305/2011/UE Standard EN12050-4

Thread connection according to NF EN ISO 228-1

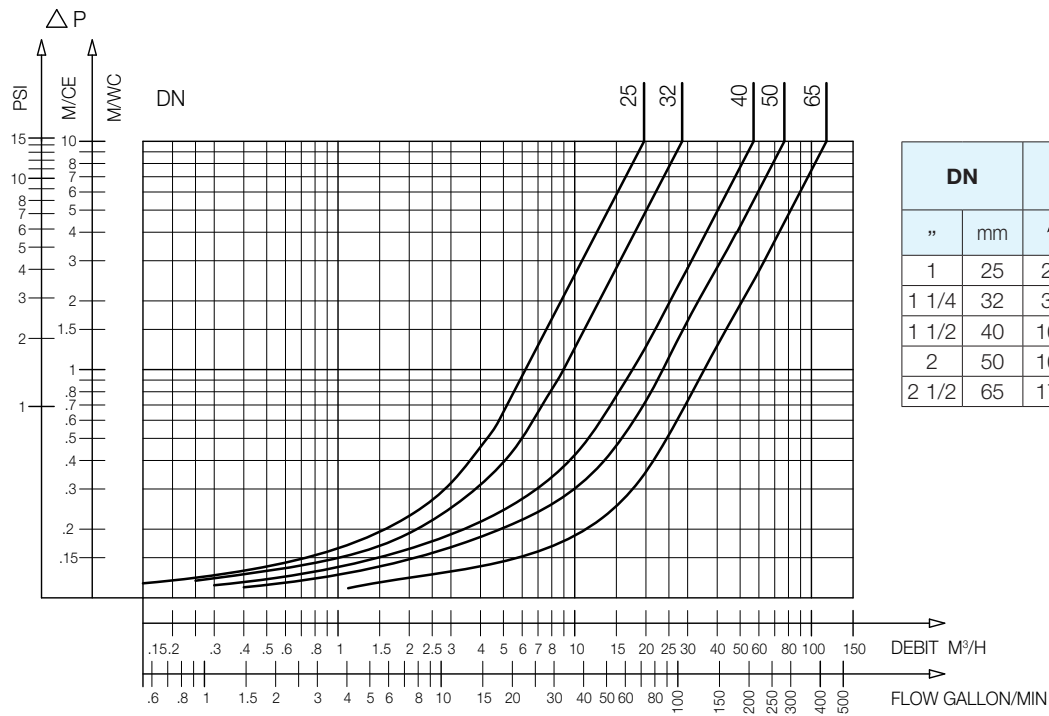
Application

Waste water, viscous liquids, loaded liquids.

Operation

Direction for use :

- Solid line: Valve completely open

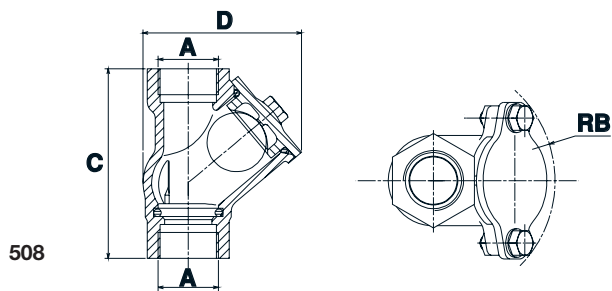


DN		Opening pressure in mm/CE		Kv m ³ /H	ζ
"	mm	↑	↔		
1	25	25	Near to 0	19,63	1,62
1 1/4	32	30		28,44	2,07
1 1/2	40	160		56,97	1,26
2	50	160		75,86	2,69
2 1/2	65	170		115,70	2,13

508 - Headloss chart

Sizing

A		RB	C	D
"	mm	mm	mm	mm
1	26/34	76	114	95
1 1/4	33/42	85	132	110,5
1 1/2	40/49	93	145	121
2	50/60	107	173,5	144
2 1/2	66/76	127	200	174,5



The descriptions and photographs contained in this product specification sheet are supplied by way of information only and are not binding.

Socla reserves the right to carry out any technical and design improvements to its products without prior notice. Warranty : All sales and contracts for sale are expressly conditioned on the buyer's assent to Socla terms and conditions found on its website at www.socla.com. Socla hereby objects to any term, different from or additional to Socla terms, contained in any buyer communication in any form, unless agreed to in a writing signed by an officer of Socla.



A WATTS Brand

Socla sas

365 rue du Lieutenant Putier • 71530 Virey-Le-Grand • France

Tel. +33 03 85 97 42 00 • Fax +33 03 85 97 42 42

contact@wattswater.com • www.socla.com

ISO 9001 version 2015 / ISO 18001