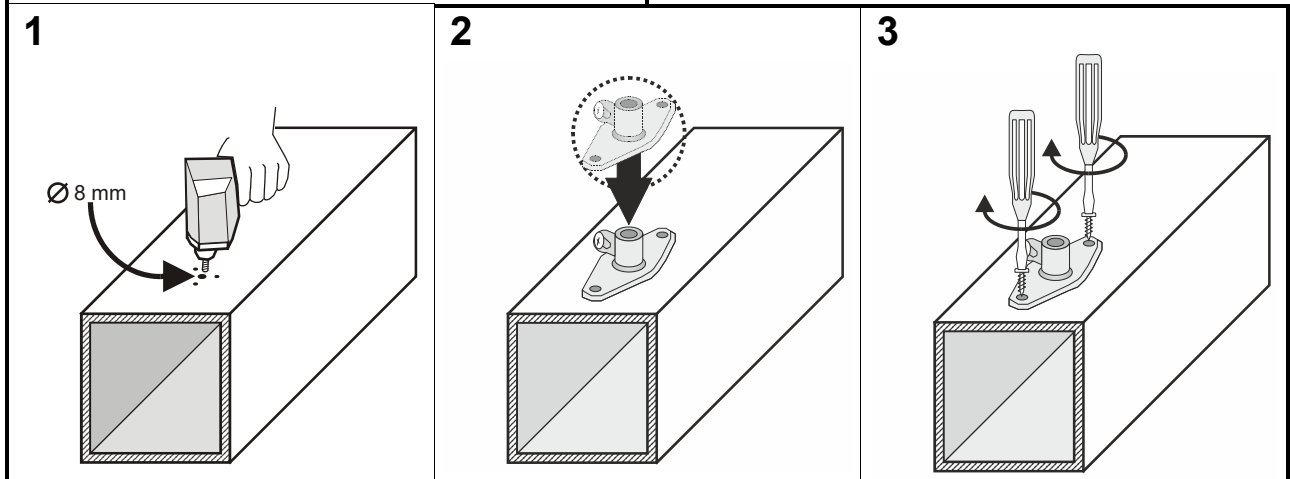
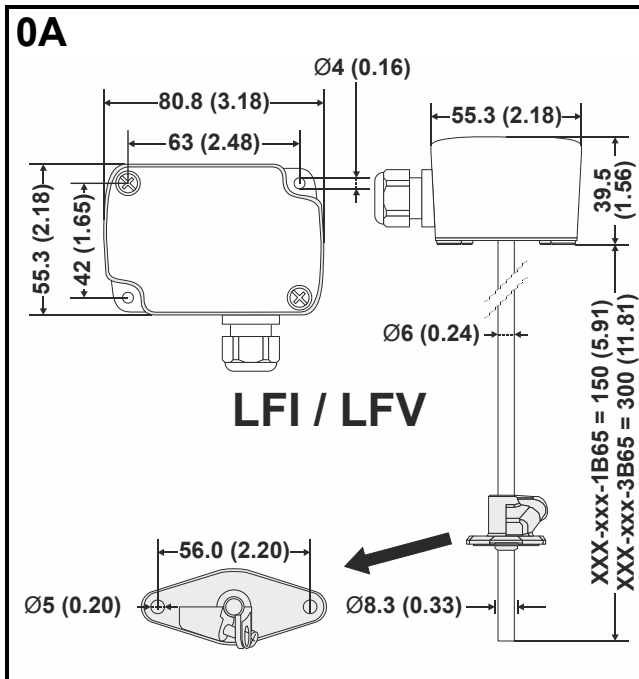


## LFI / LFV

### Duct Temperature Transmitters

#### MOUNTING INSTRUCTIONS



**4**

**5**

**6a: LFI**

CONTROLLER INPUT	BURDEN RL	POWER SUPPLY (20 mA)
0.2 ... 1 V	50 Ohm	11...35 VDC (e.g., 12 VDC / 18 VDC / 24 VDC)
1 ... 5 V	250 Ohm	15...35 VDC (e.g., 18 VDC / 24 VDC)
2 ... 10 V	500 Ohm	20...35 VDC (e.g., 24 VDC)

**6b: LfV**

**7**

**Home and Building Technologies**

Honeywell GmbH  
 Böblinger Strasse 17  
 71101 Schönaich, Germany  
 Phone +49 (0) 7031 637 01  
 Fax +49 (0) 7031 637 740  
<http://ecc.emea.honeywell.com>